

## Loft-Style Condo in Hawthorne!

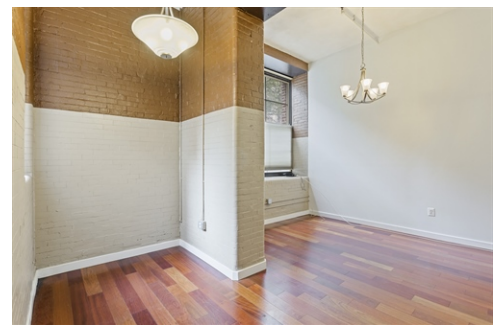


Listed: \$299,900 | Lease: \$2,000



1201 Fitzwater St  
#107, Philadelphia, PA 19147

- » Beds: 1 | Baths: 1 Full
- » MLS #: PAPH2293160
- » Condominium | Lot: 714 ft<sup>2</sup>
- » Spacious 1 bed, 1 bath unit + den with gated parking for 1 car
- » Cherry hardwood floors, high ceilings, pendant lighting, painted brick walls
- » More Info: [TheHawthorneLofts107.com](http://TheHawthorneLofts107.com)



Eric Fox  
(267) 625-4504 (Eric Cell)  
[eric@efoxhomes.com](mailto:eric@efoxhomes.com)  
<http://www.efoxhomes.com>



Compass  
1430 Walnut Street  
3rd Floor  
Philadelphia, PA 19102  
(267) 435-8015

Don't miss this spacious one bed, one bath unit plus den with secure, gated parking for 1 car. Located just off South St in the fabulous Hawthorne area this unit features beautiful Cherry hardwood floors throughout, high ceilings, modern pendant lighting and painted brick walls. Enter into the kitchen area complete with granite countertops, abundant cabinet space and stainless steel appliances. A separate dining nook is located off the kitchen. The living area has amazing natural light and a portion of this space has been transformed into a second bedroom/den with sliding frosted doors for privacy (which can easily be removed). The primary bedroom has huge windows, two large closets plus a bonus storage area above. The three piece bathroom has neutral tile, a modern vanity and a shower/tub combo with glass shower doors. Amenities at The Hawthorne include a gym, yoga room, steam room, lounge / game room with pool table and tv, as well as a shared roof deck with amazing city views. With a Walk Score of 98, this area is a walker's paradise. Conveniently located near Acme, Whole Foods, Sprouts & Target at Lincoln Square as well as neighborhood favorites, Hawthorne's, Angelo's Pizza, Isgro Pastries and the Italian Market.

